

PORTOFINO

SINCE 1984



THE SIZE AND CLASSICAL ELEGANCE OF THE FIRST PORTOFINO
ASSURED IT OF WIDESPREAD ATTENTION



————— The former fishing village of Portofino on the Gulf of Tigullio near Genoa in Italy has for decades been a desirable destination for the international rich and famous. The narrow little houses in red and terracotta clustered tightly around the picturesque natural harbour provide the perfect backdrop for stars and celebrities.

Even today, the international jet set gathers in Portofino to enjoy the relaxed, laid-back lifestyle of southern Europe. The classically elegant Portofino watch family is a subtle reflection of this lifestyle. The history of the Portofino watch family began in the late 1970s. Back then, IWC noted a steady demand for simple, classic models. The elegant IWC Lépine open-face pocket watch, Reference 5201, served as the basis for the new watch line: its dial was turned through 90 degrees and equipped with a moon phase display. And that was it; the new “pocket-watch style wristwatch” Reference 5251, which was unveiled in 1984, went by the name “Portofino”. Since then, the Portofino collection has become one of IWC’s most successful watch families: an expression of understatement and good taste.

In 1988, to mark its 120th anniversary, IWC unveiled the Portofino Reference 2532, a consummately elegant timepiece in a gold case with Roman numerals. That same year saw the launch of the Portofino Reference 3731 with the hybrid 631-calibre movement. Although the chronograph consisted of 233 parts, the height of the movement was just 3.8 millimetres: an outstanding achievement. In 1993, IWC unveiled the Portofino Hand-Wound, Reference 2010, with an ultra-slim movement measuring just 1.85 millimetres in height. The slimmest of all IWC watches, it sold successfully until 2005. A mechanical chronograph joined the watch family in 2007.

In 2011, the Year of the Portofino, an IWC hand-wound movement from the 8-day 59000-calibre family became the first to scale the pinnacle of haute horlogerie. The 59210 calibre in the Portofino Hand-Wound Eight Days only needs winding once a week. In 2014, it will be joined by the 59230 calibre in the Portofino Hand-Wound Big Date.

FOR MORE THAN A QUARTER OF A CENTURY, IT HAS BEEN THE UNASSUMING STAR OF THE IWC COLLECTIONS, AN EXPRESSION OF UNDERSTATEMENT AND GOOD TASTE

Last year, for the first time ever, IWC presented a Portofino Midsize collection for watch lovers both male and female who prefer a slightly smaller and more luxurious timepiece. With a case measuring just 37 millimetres in diameter, the Portofino Midsize Automatic is also perfect for a slimmer wrist. This distinctive timepiece is available in four red gold and six stainless-steel versions, each of which is available with a diamond-set bezel or a slightly more understated variation with 12 precious stones on the dial.

The moon phase display makes its return to the Portofino watch in the Midsize collection. In the Portofino Midsize Automatic Moon Phase, the Earth’s satellite is imaginatively set in a classic cloud scene hovering in space in a star-studded night sky. No fewer than five of the models glitter with a combination of diamonds, moon and stars: one version in white gold, three in red gold and one in stainless steel.

The Portofino Midsize Automatic Day & Night combines the luxury of diamonds and mother-of-pearl with the nonchalance of a new and more mobile generation. Thanks to a second time zone and 24-hour day/night display, the watch ensures that even those whose parties turn day into night never lose track of time.

Three luxurious Portofino Automatic models are now also available in red or white gold cases with diamond-set bezels and Santoni alligator leather straps.



THE PORTOFINO 8-DAY POWER RESERVE COLLECTION

There are moments you look forward to all week long. For many watch lovers, manually winding the movement of a timepiece with an IWC-manufactured calibre from the 59000 family is one of them. The powerful movements run precisely and reliably for a full 192 hours, or 8 days, before automatically stopping. The Portofino Hand-Wound Big Date is equipped with a large double-digit date display at “12 o’clock”, which is reminiscent of the digital date display found in the legendary Pallweber system of 1884. The Portofino Hand-Wound Eight Days shows the date at “3 o’clock”. For both watches, the energy remaining can be seen in the power reserve display on the dial between “8” and “9 o’clock”. All versions of the Portofino 8-day power reserve collection feature a see-through sapphire glass back and are fitted with a Santoni alligator leather strap.



PORTOFINO

PORTOFINO HAND-WOUND BIG DATE

REFERENCE 5161



REF. IW516101
in 18-carat white gold with black
alligator leather strap



REF. IW516102
in 18-carat red gold with dark brown
alligator leather strap



BACK VIEW
for both References
(shown here is IW516102)

Mechanical movement · Hand-wound · IWC-manufactured 59230 calibre (59000-calibre family) · 8-day power reserve when fully wound · Power reserve display · Large, double-digit date display · Small hacking seconds · Breguet spring · Sapphire glass, arched edge, antireflective coating on both sides · See-through sapphire-glass back · Water-resistant 3 bar · Case height 13 mm · Diameter 45 mm · Alligator leather strap by Santoni

PORTOFINO HAND-WOUND EIGHT DAYS

REFERENCE 5101



REF. IW510104
in 18-carat red gold with dark brown
alligator leather strap



REF. IW510107
in 18-carat red gold with dark brown
alligator leather strap

Mechanical movement · Hand-wound · IWC-manufactured 59210 calibre (59000-calibre family) · 8-day power reserve when fully wound · Power reserve display · Date display · Small hacking seconds · Breguet spring · Sapphire glass, arched edge, antireflective coating on both sides · See-through sapphire-glass back · Water-resistant 3 bar · Case height 12 mm · Diameter 45 mm · Alligator leather strap by Santoni

PORTOFINO





PORTOFINO

PORTOFINO HAND-WOUND EIGHT DAYS

REFERENCE 5101



REF. IW510103
in stainless steel with brown
alligator leather strap



REF. IW510102
in stainless steel with dark brown
alligator leather strap

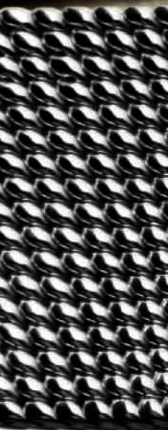


REF. IW510106
in stainless steel with black
alligator leather strap

Mechanical movement · Hand-wound · IWC-manufactured 59210 calibre (59000-calibre family) · 8-day power reserve when fully wound · Power reserve display · Date display · Small hacking seconds · Breguet spring · Sapphire glass, arched edge, antireflective coating on both sides · See-through sapphire-glass back · Water-resistant 3 bar · Case height 12 mm · Diameter 45 mm · Alligator leather strap by Santoni

TIMELESS ELEGANCE CAN BE MEASURED

If you approach the former fishing village of Portofino from the sea, the old, picturesque houses could easily trick you into thinking that time had stood still, until you suddenly notice the sleek yachts with their state-of-the-art technology and luxury interiors lying at anchor. The elegant Portofino Chronograph provokes a similar reaction; its striking chronograph push-buttons are reminiscent of the cockpit of 1960s Italian sports cars. In much the same style, the stopwatch displays bring a distinctly sporty touch to the entire Portofino family. The watch, which features a convex sapphire glass and appliquéd Roman numerals, is driven by the tried and tested self-winding 75320 calibre with a 44-hour power reserve. In addition to the classic alligator leather straps, these watches are available with cool but snug-fitting Milanaise mesh bracelets, which underscore the timeless character of the Portofino Chronograph.







PORTOFINO CHRONOGRAPH

REFERENCE 3910



REF. IW391020
in 18-carat red gold with dark brown
alligator leather strap



REF. IW391021
in 18-carat red gold with dark brown
alligator leather strap

Mechanical chronograph movement · Self-winding · 44-hour power reserve when fully wound · Date and day display ·
Stopwatch function with hours, minutes and seconds · Small hacking seconds · Sapphire glass, convex,
antireflective coating on both sides · Special back engraving · Water-resistant 3 bar · Case height 13.5 mm · Diameter 42 mm

PORTOFINO CHRONOGRAPH

REFERENCE 3910



REF. IW391007
in stainless steel with dark brown
alligator leather strap



REF. IW391008
in stainless steel with black
alligator leather strap

Mechanical chronograph movement · Self-winding · 44-hour power reserve when fully wound · Date and day display ·
Stopwatch function with hours, minutes and seconds · Small hacking seconds · Sapphire glass,
convex, antireflective coating on both sides · Water-resistant 3 bar · Case height 13.5 mm · Diameter 42 mm

PORTOFINO

PORTOFINO CHRONOGRAPH

REFERENCE 3910



REF. IW391009

in stainless steel with Milanaise
mesh bracelet in stainless steel



REF. IW391010

in stainless steel with Milanaise
mesh bracelet in stainless steel

Mechanical chronograph movement · Self-winding · 44-hour power reserve when fully wound · Date and day display · Stopwatch function with hours, minutes and seconds · Small hacking seconds · Sapphire glass, convex, antireflective coating on both sides · Water-resistant 3 bar · Case height 13.5 mm · Diameter 42 mm · Milanaise mesh bracelet in stainless steel

THREE HANDS, ONE CONCEPT

Simply classic. For many years this formula has been the secret of the Portofino Automatic's success. Three hands and a discreet date display: as the watch of choice for the discerning purist, it needs no more. The solid, mechanical automatic movement reliably ticks away the time. The evenly rounded sides of the 40-millimetre case make it appear even slimmer. The red gold version is available with a silver-plated or slate-coloured dial and is decorated on the back with an exquisite engraving showing a view of the harbour at Portofino. The stainless-steel models with silver-plated or black dials are available with a choice of alligator leather straps or a Milanaise mesh bracelet in stainless steel. In 2014, the Portofino Automatic collection was extended to include, for the first time, two exquisite models in red gold and a white gold version all with a diamond-set bezel and Santoni alligator leather strap. The sun-pattern finish on the dial underscores the luxurious appearance of these timepieces. The reverse side of the case also features an elegant engraving of the Portofino harbour.





PORTOFINO AUTOMATIC

REFERENCE 3565



REF. IW356504
in 18-carat red gold with dark brown
alligator leather strap



REF. IW356511
in 18-carat red gold with dark brown
alligator leather strap



BACK VIEW
for both References
(shown here is IW356511)

Mechanical movement · Self-winding · 42-hour power reserve when fully wound · Date display ·
Central hacking seconds · Sapphire glass, convex, antireflective coating
on both sides · Special back engraving · Water-resistant 3 bar · Case height 9.5 mm · Diameter 40 mm

PORTOFINO



PORTOFINO AUTOMATIC

REFERENCE 3565



REF. IW356501
in stainless steel with black
alligator leather strap



REF. IW356502
in stainless steel with black
alligator leather strap

Mechanical movement · Self-winding · 42-hour power reserve when fully wound · Date display ·
Central hacking seconds · Sapphire glass, convex, antireflective
coating on both sides · Water-resistant 3 bar · Case height 9.5 mm · Diameter 40 mm

PORTOFINO

PORTOFINO AUTOMATIC

REFERENCE 3565



REF. IW356505

in stainless steel with Milanaise
mesh bracelet in stainless steel



REF. IW356506

in stainless steel with Milanaise
mesh bracelet in stainless steel

Mechanical movement · Self-winding · 42-hour power reserve when fully wound · Date display ·
Central hacking seconds · Sapphire glass, convex, antireflective coating on both sides ·
Water-resistant 3 bar · Case height 9.5 mm · Diameter 40 mm · Milanaise mesh bracelet in stainless steel



PORTOFINO

PORTOFINO AUTOMATIC

REFERENCE 3565



REF. IW356514

in 18-carat white gold with 72 diamonds
and black alligator leather strap



REF. IW356515

in 18-carat red gold with 72 diamonds
and black alligator leather strap



REF. IW356516

in 18-carat red gold with 72 diamonds
and dark brown alligator leather strap

Mechanical movement · Self-winding · 42-hour power reserve when fully wound · Date display ·
Central hacking seconds · Sapphire glass, convex, antireflective coating on both sides · Special back engraving ·
Water-resistant 3 bar · Case height 9.5 mm · Diameter 40 mm · Alligator leather strap by Santoni



DAZZLING BEAUTY BY DAY AND AT NIGHT

For the red gold and stainless-steel versions of the Portofino Midsize Automatic Moon Phase, IWC's watch designers chose flawless, gently shimmering mother-of-pearl in white and black. The subtle, smooth lustre of the mother-of-pearl gives the dials a magnificent sense of depth, bringing them to life. A bezel set with 66 diamonds complements each piece with a fitting elegance. The watches are sold with Santoni alligator leather straps, while one of the red gold versions is available with an exquisite Milanaise mesh bracelet. Milanaise mesh bracelets are also available in stainless steel or red gold for all the other models. The dial of the sumptuous white gold model is coated with several layers of jet black lacquer, which provides a striking backdrop to the pure white diamonds. The Portofino Midsize Automatic Day & Night with a second time zone is the perfect watch for globetrotting business people, jet setters and night owls. While the hour, minute and seconds hand display local time, the blue hand on the inner 24-hour ring shows the time at a second location of the wearer's choice. To help the wearer easily differentiate between day and night, the daytime hours are shown white and night-time in blue. The crown provides a fast, simple means of setting the time separately. Thanks to its elegant design with a diamond-set bezel and white mother-of-pearl dial, this exceptional watch will ensure its wearer cuts a fine figure no matter what the time. The watch features a sumptuous red gold or stainless-steel case, combined with a black or dark blue alligator leather strap from the House of Santoni. It is also available with a Milanaise mesh bracelet in stainless steel or red gold.

PORTOFINO MIDSIZE AUTOMATIC MOON PHASE

REFERENCE 4590



REF. IW459004

in 18-carat white gold with 90 diamonds
on the case and
84 diamonds on the black lacquer dial and
black alligator leather strap

Mechanical movement · Self-winding · 42-hour power reserve when fully wound · Central hacking seconds ·
Moon phase display · Sapphire glass, convex, antireflective coating on both sides ·
Water-resistant 3 bar · Case height 11 mm · Diameter 37 mm · Alligator leather strap by Santoni

PORTOFINO



PORTOFINO MIDSIZE AUTOMATIC MOON PHASE

REFERENCE 4590



REF. IW459002

in 18-carat red gold with 66 diamonds
on the case and 12 diamonds
on the white mother-of-pearl dial and
black alligator leather strap



REF. IW459005

in 18-carat red gold with 66 diamonds
on the case and 12 diamonds
on the white mother-of-pearl dial and Milanese
mesh bracelet in 18-carat red gold

Mechanical movement · Self-winding · 42-hour power reserve when fully wound · Central hacking seconds ·
Moon phase display · Sapphire glass, convex, antireflective coating on both sides · Water-resistant 3 bar · Case height 11 mm ·
Diameter 37 mm · Alligator leather strap by Santoni · Milanese mesh bracelet in 18-carat red gold

PORTOFINO

PORTOFINO MIDSIZE AUTOMATIC MOON PHASE

REFERENCE 4590



REF. IW459003

in 18-carat red gold with 66 diamonds
on the case and 12 diamonds
on the black mother-of-pearl dial and
dark brown alligator leather strap



REF. IW459001

in stainless steel with 66 diamonds
on the case and 12 diamonds
on the white mother-of-pearl dial and
dark blue alligator leather strap

Mechanical movement · Self-winding · 42-hour power reserve when fully wound · Central hacking seconds ·
Moon phase display · Sapphire glass, convex, antireflective coating on both sides ·
Water-resistant 3 bar · Case height 11 mm · Diameter 37 mm · Alligator leather strap by Santoni

PORTOFINO MIDSIZE AUTOMATIC DAY & NIGHT

REFERENCE 4591



REF. IW459102

in 18-carat red gold with 66 diamonds
on the case and 12 diamonds
on the white mother-of-pearl dial and
black alligator leather strap



REF. IW459101

in stainless steel with 66 diamonds
on the case and 12 diamonds
on the white mother-of-pearl dial and
dark blue alligator leather strap

Mechanical movement · Self-winding · 42-hour power reserve when fully wound · Hour hand adjustable
in one-hour steps (TZC = Time Zone Corrector) · 24-hour display (second time zone) ·
Central hacking seconds · Sapphire glass, convex, antireflective coating on both sides · Water-resistant 3 bar ·
Case height 11 mm · Diameter 37 mm · Alligator leather strap by Santoni

PORTOFINO





RADIANT BEAUTIES

With its 37-millimetre Portofino Midsize Automatic, IWC Schaffhausen has made the classically elegant three-hand timepiece more attractive to watch lovers with slimmer wrists. The ten models with their diamond-set bezels or dials will appeal to buyers seeking puristic design combined with a distinct note of luxury. The watch is available in four red gold and six stainless-steel versions. The precious stones of exceptionally high quality give these watches a radiance of their own, while the design itself remains sleek and simple. The fine sun-pattern finish on the dials reflects light in a myriad of different ways, while the polished surfaces of the case, like the guilloché work, give the watches an opulent style of their own. Alligator leather straps from Santoni in delicate nuances of colour, from light and dark brown to grey and black, as well as in orange, lilac and red, complement the dial and case of nine of the models perfectly, while one of the stainless-steel models is fitted with an exquisite Milanaise mesh bracelet. Each timepiece is also available with a Milanaise mesh bracelet in stainless steel or 18-carat red gold.



PORTOFINO MIDSIZE AUTOMATIC

REFERENCE 4581



REF. IW458107
in 18-carat red gold with 66 diamonds
on the case and
lilac alligator leather strap



REF. IW458108
in 18-carat red gold with 66 diamonds
on the case and
black alligator leather strap

Mechanical movement · Self-winding · 42-hour power reserve when fully wound · Date display ·
Central hacking seconds · Sapphire glass, convex, antireflective coating on both sides ·
Water-resistant 3 bar · Case height 9 mm · Diameter 37 mm · Alligator leather strap by Santoni



PORTOFINO MIDSIZE AUTOMATIC

REFERENCE 4581



REF. IW458103

in stainless steel with 66 diamonds
on the case and
dark brown alligator leather strap



REF. IW458104

in stainless steel with 66 diamonds
on the case and
grey alligator leather strap



REF. IW458109

in stainless steel with 66 diamonds
on the case and
red alligator leather strap

Mechanical movement · Self-winding · 42-hour power reserve when fully wound · Date display ·
Central hacking seconds · Sapphire glass, convex, antireflective coating on both sides ·
Water-resistant 3 bar · Case height 9 mm · Diameter 37 mm · Alligator leather strap by Santoni

PORTOFINO MIDSIZE AUTOMATIC

REFERENCE 4581



REF. IW458105

in 18-carat red gold with 12 diamonds
on the dial and
orange alligator leather strap



REF. IW458106

in 18-carat red gold with 12 diamonds
on the dial and
dark brown alligator leather strap

Mechanical movement · Self-winding · 42-hour power reserve when fully wound · Date display ·
Central hacking seconds · Sapphire glass, convex, antireflective coating on both sides ·
Water-resistant 3 bar · Case height 9 mm · Diameter 37 mm · Alligator leather strap by Santoni

PORTOFINO

PORTOFINO MIDSIZE AUTOMATIC

REFERENCE 4581



REF. IW458101
in stainless steel with 12 diamonds
on the dial and
light brown alligator leather strap



REF. IW458102
in stainless steel with 12 diamonds
on the dial and
black alligator leather strap



REF. IW458110
in stainless steel with 12 diamonds
on the dial and Milanaise
mesh bracelet in stainless steel

Mechanical movement · Self-winding · 42-hour power reserve when fully wound · Date display · Central hacking seconds ·
Sapphire glass, convex, antireflective coating on both sides · Water-resistant 3 bar ·
Case height 9 mm · Diameter 37 mm · Alligator leather strap by Santoni · Milanaise mesh bracelet in stainless steel